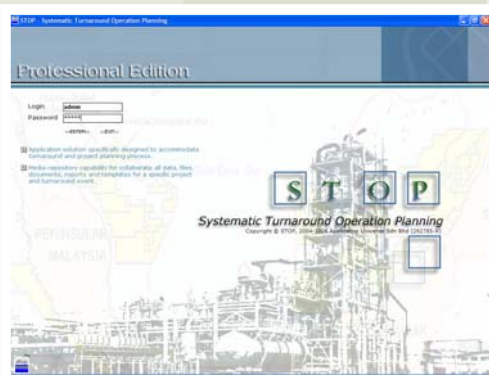


Plant Turnaround is the most expensive, complex and difficult to manage maintenance projects in oil & gas and petrochemical industry. When averaged on the turnaround cycle, the cost of turnaround typically account for about 25% of the maintenance expenditure.

There is a tendency to constantly extent operation lengths, whilst at the same time targeting for shorter turnaround duration at optimum cost. These requirements put an increasing demand on the computerized turnaround management systems.

## STOP™ System – Boosting opportunities

- Minimizing the Turnaround planning cost for the long run by reducing the planning time to more than 50% respectively.
- Get full control over all data & information associated with a specific Turnaround.
- Human-friendly tool for easy planning, analysis and data correction.
- The dynamic of the system itself; tailored-made according to your needs.



CONTACT OUR REPRESENTATIVE TODAY



Systematic Turnaround Operation Planning

Plant Turnaround & Project Planning Software

# Financial Objectives. Software Solutions.



Software R&D Company



© Application Universe Sdn Bhd (724485 – W)  
1-15 • Jln Kajang Perdana 3 • Kajang Perdana  
Avenue • 43000 Kajang • Selangor • MALAYSIA  
Phone (603) 8733 1734/36 • Fax (603) 8733 1739  
[www.applicationuniverse.com.my](http://www.applicationuniverse.com.my)  
[enquiry@applicationuniverse.com.my](mailto:enquiry@applicationuniverse.com.my)

- Resource Planning
- Material Handling
- Execution Coordination
- Information Control
- Integration
- Reporting & Charts

*By providing such a broad spectrum of design assessment, rapid system development, testing and quality assurance services, STOP system has one aim in general – setting a unique, comprehensive and massive tool for project & turnaround planning activities with Graphical User Interface (GUI) approach.*

## Comprehensive Planning Tool..

With the growing complexities of today's projects, a new class of planning tools is needed – comprehensive planning management. STOP system is designed to improve productivity by minimizing the planning time and maximizing the information resources in order for planning managers and decision makers to decide, which is best for their organization.

### THE WORK PACK APPROACH

Work pack or job pack is a systematic approach of representing detail information on a particular work with required level of detail to allow correct site implementation.

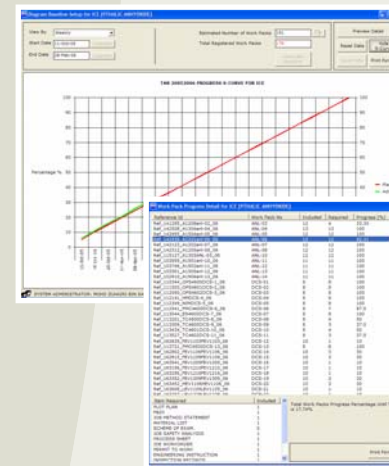
The main feature of STOP system is the ability to generate work packs. This is the best platform for turnaround planners to develop work packs electronically, therefore will reduce the time for preparing a large mass of work packs manually.

Job Name	Location	Status
Job 1	Location 1	Completed
Job 2	Location 2	In Progress
Job 3	Location 3	Not Started

Some processed documents included in a work pack are Job Method Statement, Material List, Scaffolding Instruction, Insulation Requirements, Equipment Isolation Sheet etc.; with or without image plus attachment files associated with a specific job.

### FILES REPOSITORY SYSTEM

Maintaining crucial data and information in a safe and reliable condition is an important precondition for profitability. That is why STOP system prepares users with a platform not only for data migration & processing purposes, but also acts as a tool to collaborate unlimited format files, documents, reports and templates associated with a specific work process and project. These documents are assets of the company representing final package based on countless man hours of labor and therefore it should not be left outside from the system.



- Well-organized representation of work packs.
- Ability to import & export data from external sources plus integration with scheduling tools.
- Dynamic reporting queries with multiple filtering criterias for information sorting.
- Ability to track down planning progress with predefined work status.
- Maximum systems security and access control for preserving data integrity.
- STOP Source Manager for data & system's maintenance.

